

### Specification

|                                  |   |                               |
|----------------------------------|---|-------------------------------|
| Nominal Voltage                  | 12V   |                               |
| Nominal Capacity(20HR)           | 60.0AH  |                               |
| Dimension                        | Length  | 259±1mm (10.2 inches)         |
|                                  | Width   | 168±1mm (6.61 inches)         |
|                                  | Container Height  | 190±1mm (7.48 inches)         |
|                                  | Total Height (with Terminal)  | 190±1mm (7.48 inches)         |
| Approx Weight                    | Approx 19.7 kg (43.4lbs)  |                               |
| Terminal                         | T6  |                               |
| Container Material               | ABS   |                               |
| Rated Capacity                   | 60.0 AH/3.00A   | (20hr, 1.80V/cell, 25°C/77°F) |
|                                  | 55.4 AH/5.54A   | (10hr, 1.80V/cell, 25°C/77°F) |
|                                  | 48.55 AH/9.71A  | (5hr, 1.75V/cell, 25°C/77°F)  |
|                                  | 42.9 AH/14.3A   | (3hr, 1.75V/cell, 25°C/77°F)  |
|                                  | 35.6 AH/35.6A   | (1hr, 1.60V/cell, 25°C/77°F)  |
| Max. Discharge Current           | 600A (5s)   |                               |
| Internal Resistance              | Approx 8.2mΩ  |                               |
| Operating Temp. Range            | Discharge   | -20~55°C (-4~131°F)           |
|                                  | Charge  | 0~40°C (32~104°F)             |
|                                  | Storage   | -20~50°C (-4~122°F)           |
| Nominal Operating Temp. Range    | 25±3°C (77±5°F)   |                               |
| Cycle Use                        | Initial Charging Current less than 15A. Voltage   |                               |
|                                  | 14.4V~15.0V at 25°C(77°F)Temp. Coefficient -30mV/°C   |                               |
| Standby Use                      | No limit on Initial Charging Current Voltage  |                               |
|                                  | 13.5V~13.8V at 25°C(77°F)Temp. Coefficient -20mV/°C   |                               |
| Capacity affected by Temperature | 40°C (104°F)  | 103%                          |
|                                  | 25°C (77°F)   | 100%                          |
|                                  | 0°C (32°F)  | 86%                           |
| Self Discharge                   | Leoch LPCG series batteries may be stored for up to 9 months at 25°C(77°F) and then a freshening charge is required. For higher temperatures the time interval will be shorter. |                               |



### Applications

- ◆ Railway and marine systems
- ◆ Electric tools
- ◆ Vehicle in place of walking
- ◆ Lawn mowers
- ◆ Golf trolleys and golfcart
- ◆ Electric toys
- ◆ Portable power
- ◆ Wheelchairs
- ◆ Medical equipments.



### Constant Current Discharge (Amperes) at 25 °C (77°F)

| F.V/Time   | 10min | 15min | 20min | 30min | 45min | 1h   | 2h   | 3h   | 4h   | 5h   | 6h   | 8h   | 10h  | 20h  |
|------------|-------|-------|-------|-------|-------|------|------|------|------|------|------|------|------|------|
| 1.85V/cell | 67.8  | 58.7  | 52.8  | 42.0  | 32.0  | 26.7 | 16.8 | 12.6 | 10.3 | 8.86 | 7.68 | 6.20 | 5.26 | 2.93 |
| 1.80V/cell | 81.5  | 67.9  | 60.1  | 46.8  | 35.9  | 29.7 | 18.2 | 13.6 | 11.1 | 9.41 | 8.15 | 6.54 | 5.54 | 3.00 |
| 1.75V/cell | 94.5  | 77.3  | 66.8  | 51.0  | 38.3  | 31.4 | 19.1 | 14.3 | 11.5 | 9.71 | 8.41 | 6.70 | 5.62 | 3.04 |
| 1.70V/cell | 105.0 | 84.1  | 71.6  | 54.0  | 40.0  | 32.8 | 20.0 | 14.7 | 11.8 | 9.98 | 8.64 | 6.85 | 5.71 | 3.09 |
| 1.67V/cell | 112.4 | 88.4  | 74.7  | 56.1  | 41.6  | 34.0 | 20.6 | 15.2 | 12.1 | 10.2 | 8.81 | 6.95 | 5.80 | 3.13 |
| 1.60V/cell | 122.5 | 94.6  | 79.9  | 59.4  | 43.9  | 35.6 | 21.3 | 15.7 | 12.5 | 10.5 | 9.01 | 7.05 | 5.89 | 3.16 |

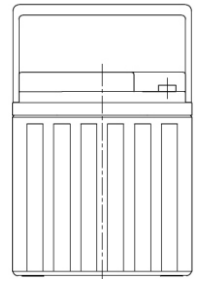
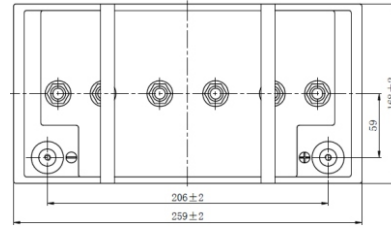
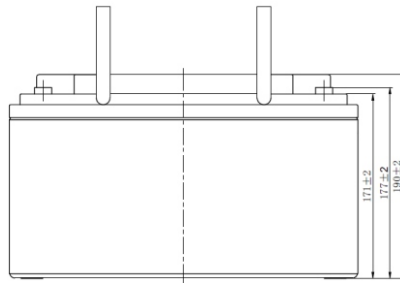
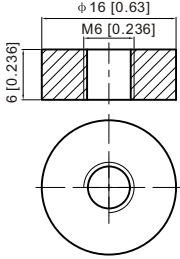
### Constant Power Discharge (Watts) at 25 °C (77°F)

| F.V/Time   | 10min | 15min | 20min | 30min | 45min | 1h   | 2h   | 3h   | 4h   | 5h   | 6h   | 8h   | 10h  | 20h  |
|------------|-------|-------|-------|-------|-------|------|------|------|------|------|------|------|------|------|
| 1.85V/cell | 127.4 | 111.2 | 100.8 | 80.8  | 61.9  | 51.9 | 32.7 | 24.7 | 20.3 | 17.4 | 15.2 | 12.3 | 10.5 | 5.85 |
| 1.80V/cell | 150.8 | 126.6 | 113.1 | 89.1  | 69.0  | 57.4 | 35.3 | 26.5 | 21.6 | 18.5 | 16.1 | 13.0 | 11.0 | 5.99 |
| 1.75V/cell | 172.3 | 142.4 | 124.5 | 96.3  | 73.1  | 60.5 | 36.9 | 27.7 | 22.5 | 19.0 | 16.5 | 13.2 | 11.1 | 6.07 |
| 1.70V/cell | 188.6 | 153.5 | 132.5 | 101.4 | 76.1  | 62.9 | 38.6 | 28.6 | 23.0 | 19.5 | 17.0 | 13.5 | 11.3 | 6.16 |
| 1.67V/cell | 199.6 | 159.5 | 137.0 | 104.6 | 78.6  | 64.8 | 39.5 | 29.3 | 23.5 | 19.9 | 17.3 | 13.7 | 11.5 | 6.22 |
| 1.60V/cell | 213.7 | 168.2 | 145.1 | 109.7 | 82.4  | 67.5 | 40.7 | 30.1 | 24.1 | 20.4 | 17.6 | 13.9 | 11.6 | 6.27 |

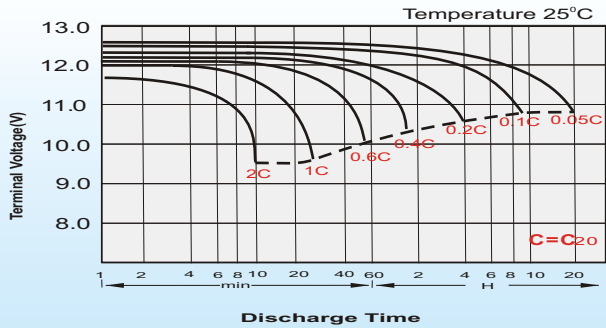
## Dimensions

### T6 Terminal

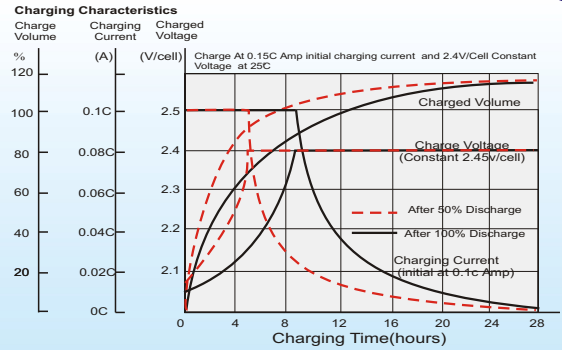
Unit: mm [inches]



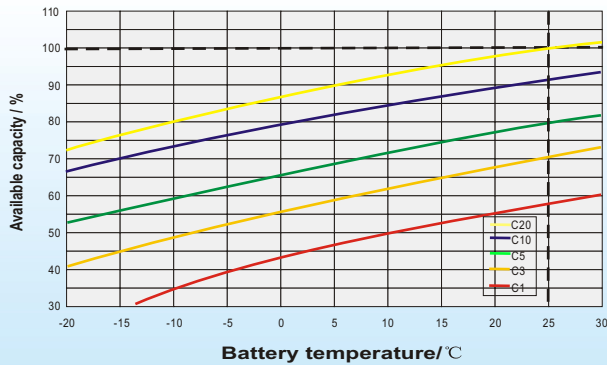
## Discharge Characteristics



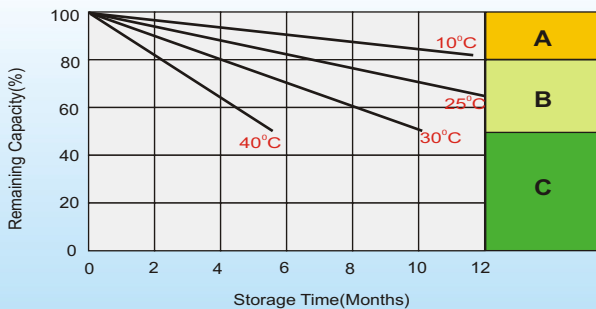
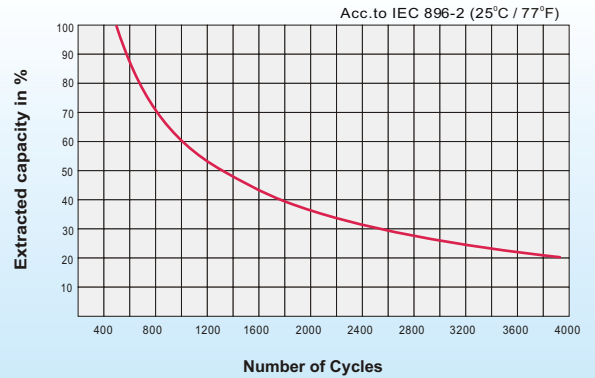
## Charging Characteristics (cycle use)



## Temperature Effects in Relation to Battery Capacity



## Cycle Life in Relation to Depth of Discharge



## Self Discharge Characteristics

**A**

No supplementary charge required  
(Carry out supplementary charge before use if 100% capacity is required.)

**B**

Supplementary charge required before use. Optional charging way as below:  
1. Charged for above 3 days at limited current 0.25CA and constant volatge 2.25V/cell.  
2. Charged for above 20hours at limited current 0.25CA and constant volatge 2.45V/cell.  
3. Charged for 8~10hours at limited current 0.05CA .

**C**

Supplementary charge may often fail to recover the capacity.  
The battery should never be left standing till this is reached.

## Sales Office

### China sales office:

Add: 5th Floor, Xinbaohui Bldg., Nanshan, Shenzhen, China. 518052  
Tel: +86-755-86036060 (100 lines)  
Fax: +86-755-26067269  
E-mail: export@leoch.com

### North America sales office:

Add: 19751 Descartes, Unit A, Foothill Ranch, CA 92610, USA  
Tel: 949-588-5853  
Fax: 949-588-5966  
E-mail: sales@leoch.us

### Europe sales office:

Add: 9B Wheatstone Park, Waterwells Business Park, Gloucester, GL2 2AQ. UK.  
Tel: +44(0) 01452 729428  
Fax: +44 (0)1452-690125  
E-mail: Sales.Europe@leoch.com